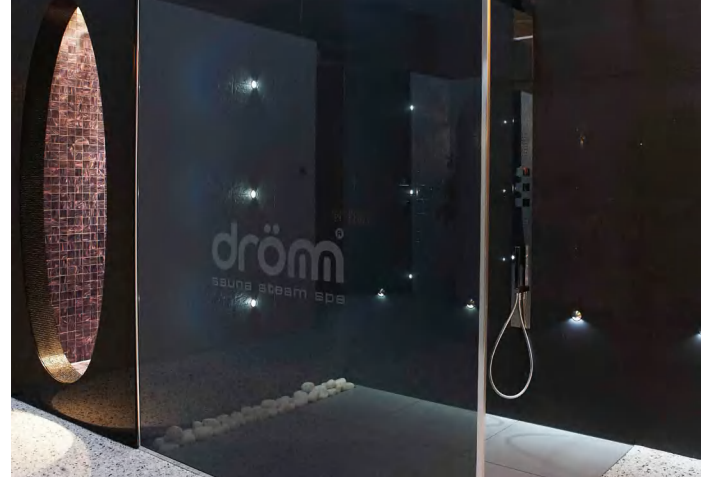


ESG Switchable™ in grey tint Power Off at Drom UK



ESG Switchable™ in grey tint Power On at Drom UK

## ESG Switchable™ LCD Privacy Glass System Solutions

Over 5 years of development have gone into creating whole glass systems in response to customer needs for more advanced solutions to suit their design requirements. ESG's new range includes a variety of films to suit different applications, electrical systems with discrete wiring and bus bars; and a new fader control option. ESG **Switchable™** is the switchable glass of choice for architects, partitioners and interior specialists.

ESG **Switchable™** is available in sizing up to 1,800mm x 3,500mm, custom shapes and sizes, and can be combined with any of our range of security or fire resistant glass products for a total glass solution.

Using only the best carefully selected materials, ESG offers bespoke solutions to fit different applications such as:

- Showers and Wetrooms
- Partitioning
- Corporate and Offices
- Health
- Residential
- and many more

### Advanced Features

- The largest size film on the market - up to 1,800mm x 3,500 mm
- High quality film with less haze
- Fader Control option available
- Electrical systems featuring discrete wiring and bus bars
- Can be combined with certified ESG fire resistant and security glass products, acoustic and decorative interlayers
- Can be incorporated in curved panels, cut into odd shapes or even hole punched to accommodate specific display applications
- No distraction of shutters. Not susceptible to mechanical failure like powered shutters, curtains or blinds
- Blocks 99% of UV rays
- Range of voltage options from 36v upwards
- Life expectancy of up to 25 Years with due care
- 5 year warranty



ESG Switchable™ Power Off at The Mews of Mayfair Restaurant, London



ESG Switchable™ Power On at The Mews of Mayfair Restaurant, London

## Applications for ESG Switchable™ LCD Privacy Glass include:

### Showers and Wet Rooms

ESG Switchable™ can be used to open up small bathrooms through increasing the levels of light and space - thus creating a much more pleasant ambience for users. This makes our privacy glass the preferred choice for use in small hotel bathrooms as well as in larger areas as a modern design feature.

- Safe and fully certified to use in wet areas
- Low working voltage from 24v
- Full system solutions
- Bespoke hinges and fittings



ESG Switchable™ Power off at Grand Designs Live



ESG Switchable™ Power on at Grand Designs Live

### Corporate Use

ESG Switchable™ LCD Privacy Glass products are available in custom sizes and shapes, making it an ideal choice for architects and designers when creating conference rooms, office & boardroom partition screens, doors, sliding/folding doors, windows and even roof-lights.

- Largest sizing on the market – perfect for partitioning
- Coloured interlayers available
- Optional attributes such as security, fire resistance and decorative interlayers available
- Can be used as a rear projection screen



ESG Switchable™ in blue tint Power off

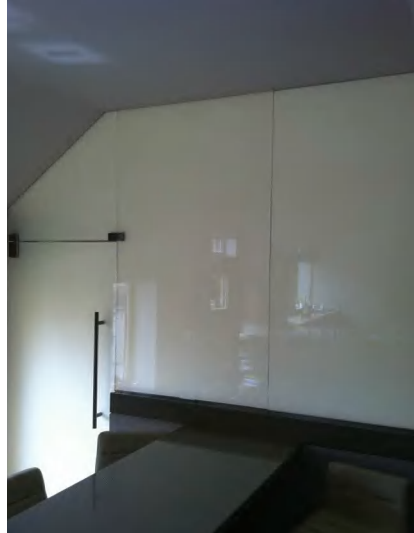


ESG Switchable™ in blue tint Power on

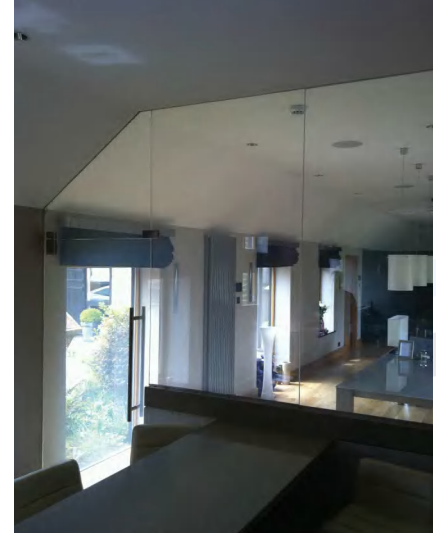
## Residential

ESG Switchable™ is increasingly being used in personal residences - whether this is to divert the public gaze away from your house within a built up area or to create areas of privacy within your home. It can even be used as a back projection screen to watch the latest DVD releases or play the latest games.

- Low voltage
- Fader control available
- Can be combined with home automation systems
- Can be used in window/bathroom or overlooked glazing, home office and studies, bath and shower screens, family areas, bedrooms and conservatories



ESG Switchable™ Power off



ESG Switchable™ Power on

## Introducing The ESG Aspire Sliding-Folding Door System

The ESG Aspire is a premium Sliding-Folding door system for interior use, offering quality and design excellence. Using an elegant frameless design and with no need for a bottom track, it adds a luxurious design feature wherever it is used to divide living and working space while still allowing light to flow through.

- ESG supply, and can install, the complete system incorporating ESG Switchable™ LCD Privacy Glass, low voltage track and conductive fittings with accompanying electrical control technology.



ESG Switchable™ Power off



ESG Switchable™ Power on

For more ideas on applications,  
please visit [www.esgswitchableglass.co.uk](http://www.esgswitchableglass.co.uk)

## Technical Specification

<p><b>Glass Colour:</b> Can be combined with colour interlayers, a wide range of tinted or patterned glass to meet bespoke requirements</p> <p><b>Glass Type:</b> Low iron, annealed, heat strengthened, tempered (All laminated)</p> <p><b>Thickness:</b> Various from 10 mm to multi-layer laminates</p> <p><b>Size:</b> Maximum size up to: 1,800mm x 3,500mm</p> <p><b>Shape:</b> Any Shape including holes</p>	<p><b>Environmental:</b> Storage -20 °C to 70 °C (-4 °F to 158 °F)</p> <p><b>Operation:</b> 0 °C – 70 °C (32 °F – 160 °F)</p> <p><b>Electrical:</b>          – Driving voltage: from 36 volts A.C.          – Current: 200 mA per square metre          – Power: 10 Watts per square metre</p> <p><b>Switching Time:</b> Approx. 100 milliseconds at room temperature</p> <p><b>Life:</b> Up to 25 Years with due care</p>
---	--

## Benefits to our Customers

- Total glass solution with ESG Controllable Intelligent Glass Systems
- Manufactured in UK so full technical support and backup
- Supply and installation service
- Electrical systems supply and fit service available
- Solutions for a wide variety of applications
- UK and European-wide delivery service on ESG's own fleet
- Crating and shipping export service

## Our Quality Standards – Your Assurance

We are committed to giving customer satisfaction through service provision of the highest standard. This applies to all areas of our business and is central to our mission.

Our products are tested in house and by Europe's leading independent, third-party certifiers and testers such as BRE and the British Standards Institute which distinguish our products and services from our competitors, and gives you, our customers, confidence about their performance.



ESG Switchable™ Power Off in a Penthouse, London



ESG Switchable™ Power On in a Penthouse, London

For full information regarding our products and relevant standards they comply with please visit our website [www.esgswitchableglass.co.uk](http://www.esgswitchableglass.co.uk)